

**BIXOLON®**

**Software Manual**

# **Unified POS Utility**

---

**THERMAL RECEIPT PRINTER**

**Rev. 2.04**

<http://www.bixolon.com>

## Introduction

The Unified POS Utility can be used for various purposes.

Details on the usage of each function are described as follows.

1) VMSM(Virtual Memory Switch Manager)

This function is used to set the virtual memory switch used for the thermal printer suitable for the user's environment.



2) NV Image Tool(Non-Volatile Image Tool)

This function helps you to download user-defined images to the flash memory in the printer and to recall and print those images with fast speed.

3) Command Test Editor

This function is used to test printing-related commands and create a brief label sample for test printing.

## Symbols Information

 <b>Caution</b>	Information that must be observed to avoid damage to your equipment or a malfunction.
 <b>Note</b>	Important information and useful tips.

# Table of Contents

- 1. Operating System (OS) Environment .....4**
- 2. Supported Printers .....4**
- 3. Usage Preparation.....5**
- 4. Unified POS Utility Usage .....6**
  - 4-1 VMSM .....6
    - 4-1-1 Getting the Memory Switch Status of the Printer .....6
    - 4-1-2 Setting the memory switch status of the Printer .....7
    - 4-1-3 Paper Save Mode .....11
    - 4-1-4 Serial communication Setting.....12
    - 4-1-5 Bluetooth configuration .....13
    - 4-1-6 Maintenance counter.....14
    - 4-1-7 Black Marks setting .....15
  - 4-2 NV Image Tool .....16
    - 4-2-1 NV Function Option.....16
    - 4-2-2 Image List Management.....17
    - 4-2-3 Correction image.....18
    - 4-2-4 Download the image .....19
    - 4-2-5 Print the image .....20
  - 4-3 Using the Command Test Editor .....21

## **1. Operating System (OS) Environment**

The following operating systems are supported for usage.

Microsoft® Windows XP SP3 (32bit)  
Microsoft® Windows XP SP1 or later (64bit)  
Microsoft Windows Server 2003 SP1 or later (32bit/64bit)  
Microsoft Windows VISTA (32bit/64bit)  
Microsoft Windows Server 2008 (32bit/64bit)  
Microsoft Windows Server 2008R2 (64bit)  
Microsoft Windows 7 (32bit/64bit)  
Microsoft Windows 8 (32bit/64bit)  
Microsoft Windows Server 2012 (64bit)  
Microsoft Windows 10 (32bit/64bit)

## **2. Supported Printers**

“Unified POS Utility” is available for the following BIXOLON printers.

BGT-100P/102P Printer  
SRP-330/330II/332II  
SRP-340II/342II  
SRP-350III/352II  
SRP-350IIIBE  
SRP-350plusIII/352plusIII  
SRP-380/382/383  
SRP-E300/E302  
SRP-F310II/F312II/F313III  
SRP-Q200  
SRP-Q300/Q302  
SRP-QE300QE302  
SRP-S300  
BK3-3  
STP-103III  
SPP-100II

## 3. Usage Preparation

### 1) Printer and PC Connection.

Connect the printer and PC via the interface cable.

(The interfaces available for usage are Serial, Parallel, USB, LAN, WLAN and Bluetooth.)

### 2) Unified POS Utility Program Execution.

The program can be installed from the accompanying CD, and Latest file versions can be downloaded from the BIXOLON website. (<http://www.bixolon.com>)

### 3) Select the interface type and communication conditions.

### 4) Click on the “Connect” Button. If the connection is successful, the inactive buttons become active with the message “The printer is connected”.



#### Caution

Please select correct information of the interface type and communication conditions. If the connection fails, the following error message appears. “Cannot open port”. In case of the PC was connected with many printers, please be careful of the port selecting.

Unified POS Utility

Interface Type

SERIAL     PARALLEL     USB  
 LAN     WLAN     BLUETOOTH

Communication Setting

Port: COM1  
Baud Rate: 115200  
Data Bits: 8  
Parity: None  
Stop Bits: 1  
Flow Control: None

IP: 192 . 168 . 100 . 189  
Port: 9100

Connect    Disconnect

VMSM  
(Virtual Memory Setting Manager)

NV Image Tool  
(Non-Volatile Image Tool)

Command Test Editor

Select Language  
English

Exit

Copyright (C) BIXOLON Co., Ltd. All rights reserved.

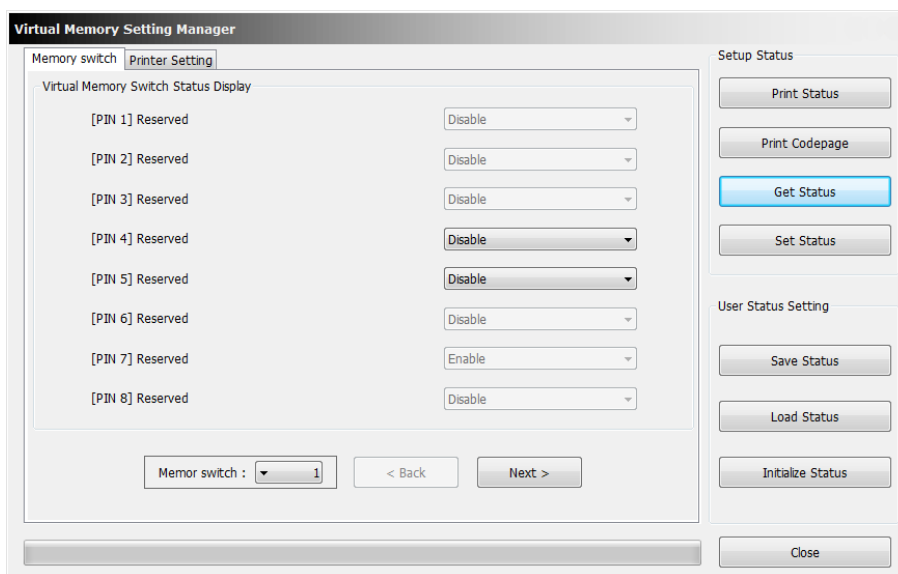
## 4. Unified POS Utility Usage

### 4-1 VMSM

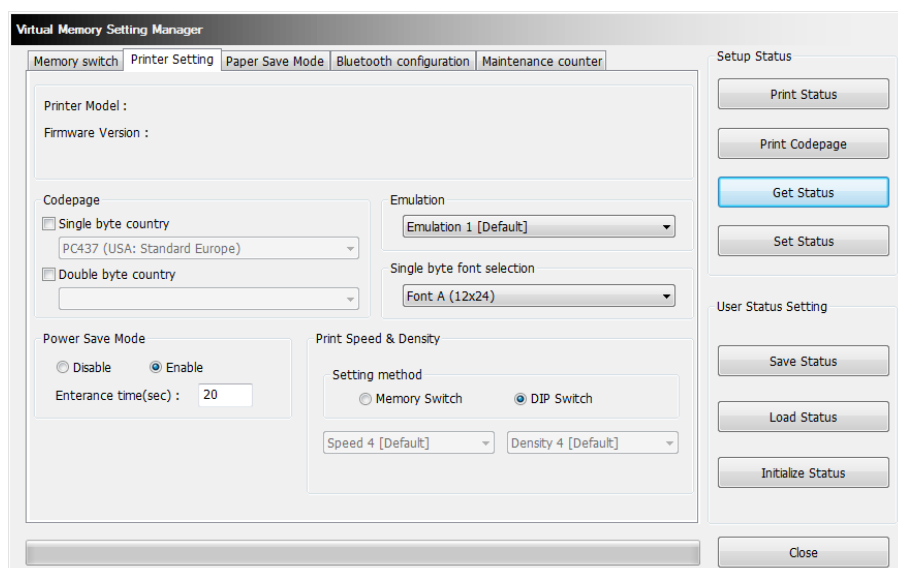
- This function is used to set the virtual memory switch used for the thermal printer suitable for the user's environment.
- If the Communication Setting is OK, click the "VMSM" button.

#### 4-1-1 Getting the Memory Switch Status of the Printer

- 1) Click the "Get Status" button. It gets the status of the Printer Setting.
- 2) The "Memory switch" Tab in the Printer Status window displays the current virtual memory switch settings of the printer, and allows new settings to be defined.

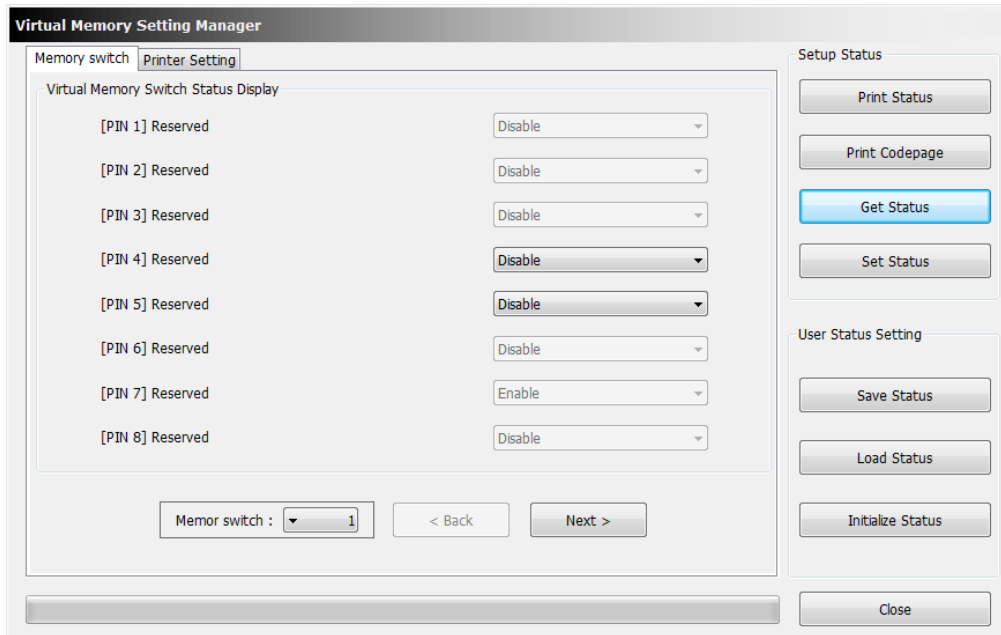


- 3) The "Printer Setting" Tab displays printer information, and code page information, and allows new settings to be defined.



## 4-1-2 Setting the memory switch status of the Printer

After getting the memory switch status of the printer, the status of the printer can be modified.



1) "Get Status"

Pressing this button displays the current memory switch settings read from the printer.

2) "Set Status"

Pressing this button allows the user to designate switch settings of the printer.

3) "Save Status"

Pressing this button saves the current memory switch settings to file.

4) "Load Status"

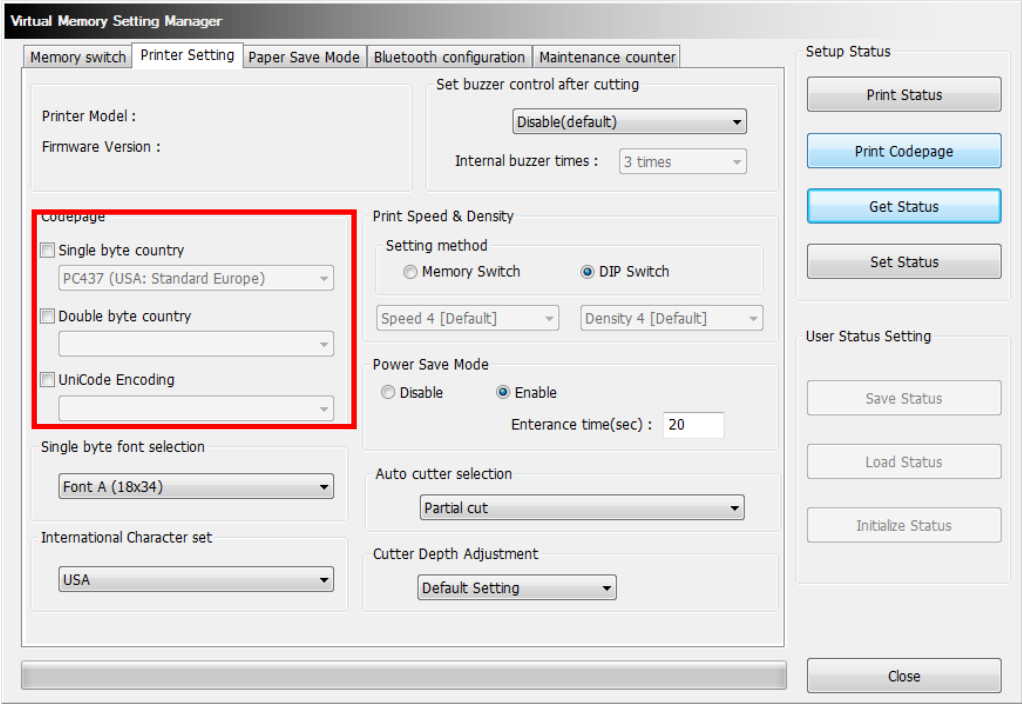
Pressing this button loads and displays the previously-saved memory switch settings file.

5) "Initialize Status"

Pressing this button resets the memory switch settings.

6) Code page

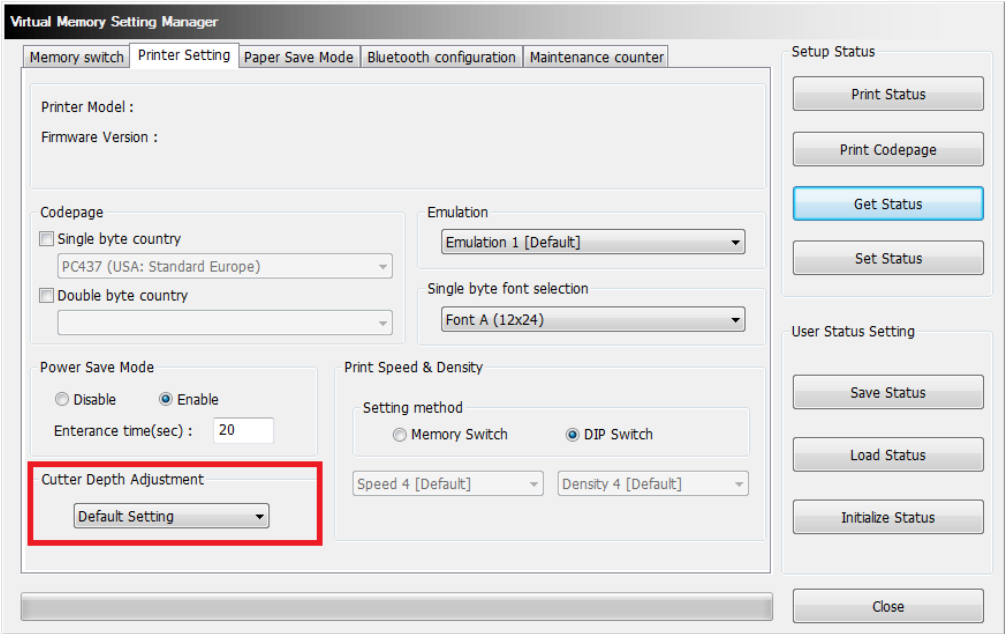
The user may select and set the code page.



**Note** Supported Model for “UniCode Encoding”  
SRP-380/382/383, SRP-Q300/Q302

7) Cutter Depth Adjustment

You can set the paper width which is not cut when using a partial cut operation.



**Note** Supported Model  
SRP-380/382/383, SRP-S300, SRP-Q300/Q302, SRP-QE300/QE302,  
SRP-E300/E302, SRP-Q200



## 8) 90 Degree Rotation Mode

Texts prints with 90 degree rotation. (eg: N to Z)

## 9) Back-Feeding Mode

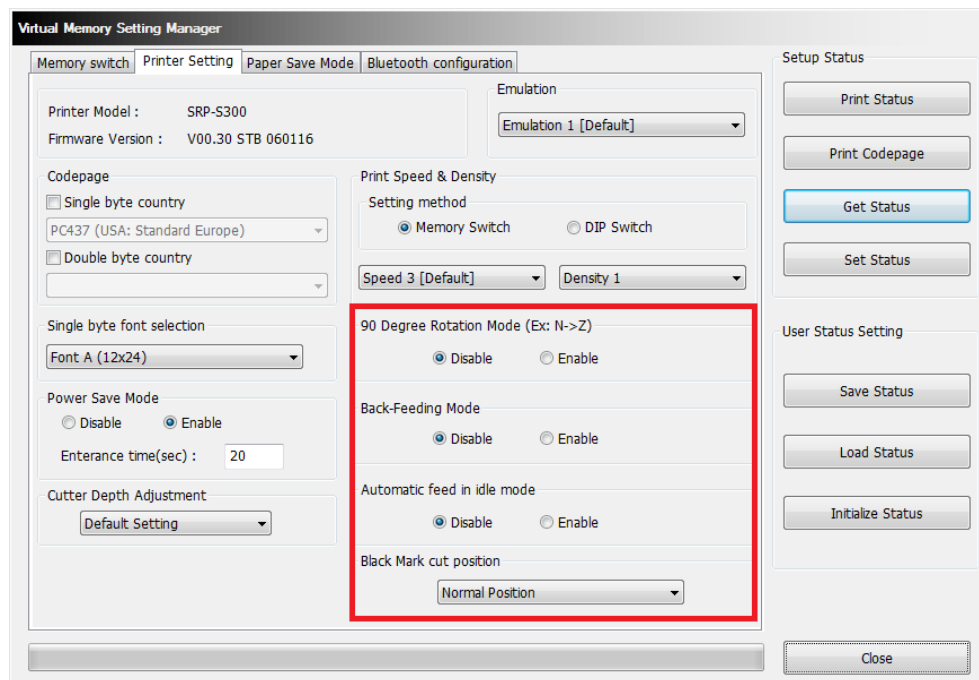
Reverse feeds the paper to the specific position before the start of printing.

## 10) Automatic feed in idle mode

Feeds the paper at every specified time interval when the printer is in the sleep mode.

## 11) Black Mark cut position

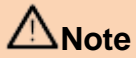
Cut after feeding the paper to the default cutting position or black-mark position.



**Note**

Supported Model  
SRP-S300L, SRP-S300T

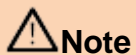
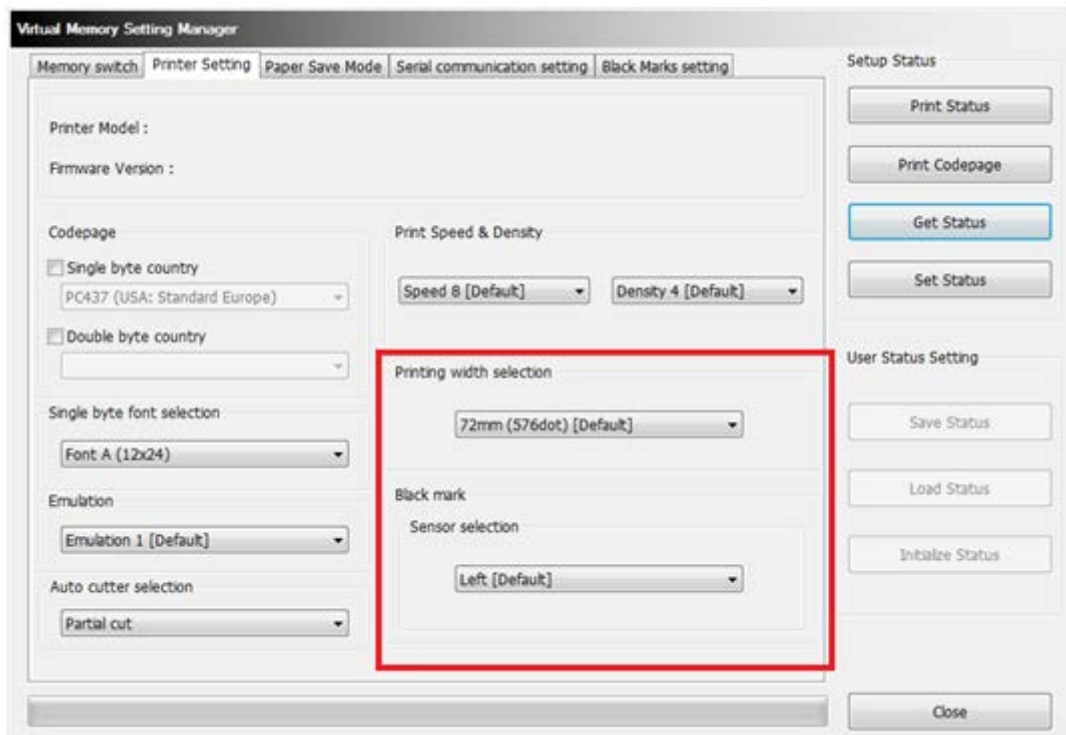
12) Printing width selection  
Selection for printing width.



**Note**

The following widths can be selected.  
72mm(576 dot, Default width)  
54mm(432 dot)  
48mm(384 dot)  
12mm(96 dot)

13) Black mark sensor selection  
Select black mark sensor.  
In front of paper outlet, the left sensor is set as default.



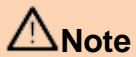
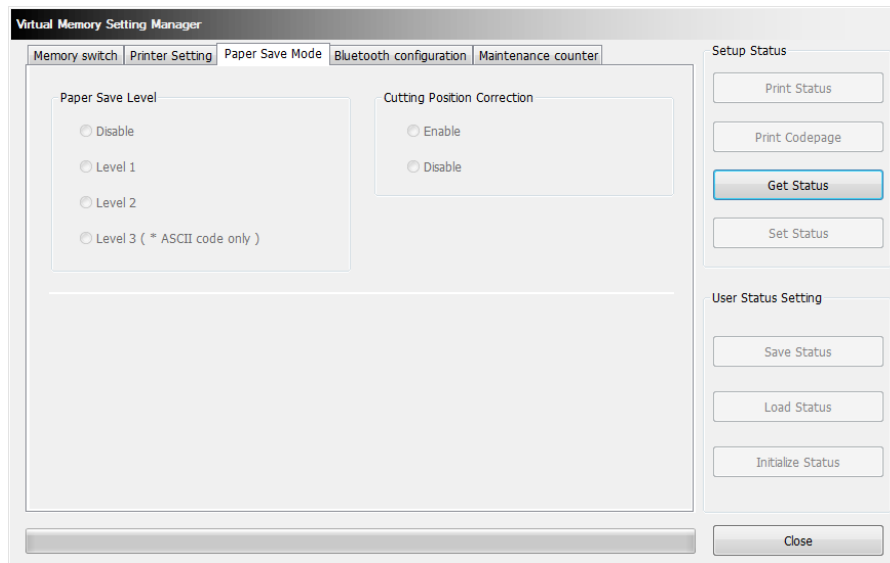
**Note**

Supported Model  
BK3-3

The black mark sensor can be selected on black mark mode(DIP Switch 1-4 ON).

## 4-1-3 Paper Save Mode

You can select the levels of “Paper Save” and the feature of “Cutting Position Correction” in the “Paper Save Mode” section (tab).



**Note**

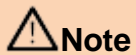
### Supported Model

SRP-350III/352III, SRP-350plusIII/352plusIII, SRP-F310II/F312II/F313II,  
SRP-380/382/383, BGT-100P/102P, SRP-330II/332II, SRP-340II/342II,  
SRP-S300, SRP-Q300/Q302, SRP-QE300/QE302, SRP-E300/E302,  
BK3-3, SRP-Q200

## 4-1-4 Serial communication Setting

Serial Communication and Special Function setting can be enabled in Serial Communication Setting Tab.

The screenshot shows the 'Virtual Memory Setting Manager' application with the 'Serial communication setting' tab selected. The 'Communication Setting' section includes dropdown menus for Baud Rate (115200), Data Btis (8), Parity (NONE), and Flow Control (DTR/DSR). The 'Special Setting' section has a checked checkbox for 'Special Setting' and a dropdown menu set to 'Special 1'. On the right side, there are two groups of buttons: 'Setup Status' with 'Print Status', 'Print Codepage', 'Get Status', and 'Set Status' buttons; and 'User Status Setting' with 'Save Status', 'Load Status', and 'Initialize Status' buttons. A 'Close' button is located at the bottom right of the window.



Supported Model(Special function setting is supported only SPP-100II.)  
SPP-100II, SRP-E300/E302, BK3-3, SRP-Q200

## 4-1-5 Bluetooth configuration

Bluetooth setting can be changed by Bluetooth Configuration Tab.

In case of Serial(Bluetooth) communication, it is not able to check Bluetooth configuration.

The screenshot shows the 'Virtual Memory Setting Manager' application with the 'Bluetooth configuration' tab selected. The interface includes several sections: 'Bluetooth configuration' with fields for 'Operating mode' (iOS), 'Authentication & Encryption' (radio buttons for Disable and Enable, with Enable selected), 'Connection mode' (dropdown menu set to Mode 2), 'PIN Code' (text field with 0000), and 'Device name' (text field with SRP-XXXXXX). 'MFi Information' displays 'Firmware version: Ver. 0.2.20', 'Hardware version: Ver. 1.1.0', 'Protocol string: com.bixolon.protocol', and 'Serial number: 0000000000000000'. 'Auto Reconnection' has radio buttons for Disable and Enable (selected), with 'Re-Count' set to 60 and 'Interval' set to 5. On the right side, there are two groups of buttons: 'Setup Status' (Print Status, Print Codepage, Get Status, Set Status) and 'User Status Setting' (Save Status, Load Status, Initialize Status). A 'Close' button is located at the bottom right of the window.

### 1) Authentication & Encryption

Sets or cancels Authentication & Encryption mode when connecting via Bluetooth

\* If Authentication & Encryption mode is disabled, connection to a device can be done without a PIN Code.

### 2) Connection Mode

Sets Mode1, Mode2, or Mode3 when connecting via Bluetooth.

- Mode1: connection possible only with the first device with which connection succeeds
- Mode2: connection with all Bluetooth enabled devices possible via use of a PIN Code
- Mode3: connection possible only with the first device with which connection succeeds and searching or use of connected device possible

### 3) PIN Code

Changes the PIN Code required for Bluetooth connections. (maximum 12 characters long)

### 4) Device Name

Changes the device name produced when establishing a Bluetooth connection.  
(maximum 12 characters long)

### 5) MFi Information

In case of iOS mode, MFi information will be displayed.

### 6) Auto Reconnection

Retry setting on Bluetooth can be enabled when Bluetooth connection is released.

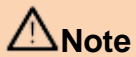
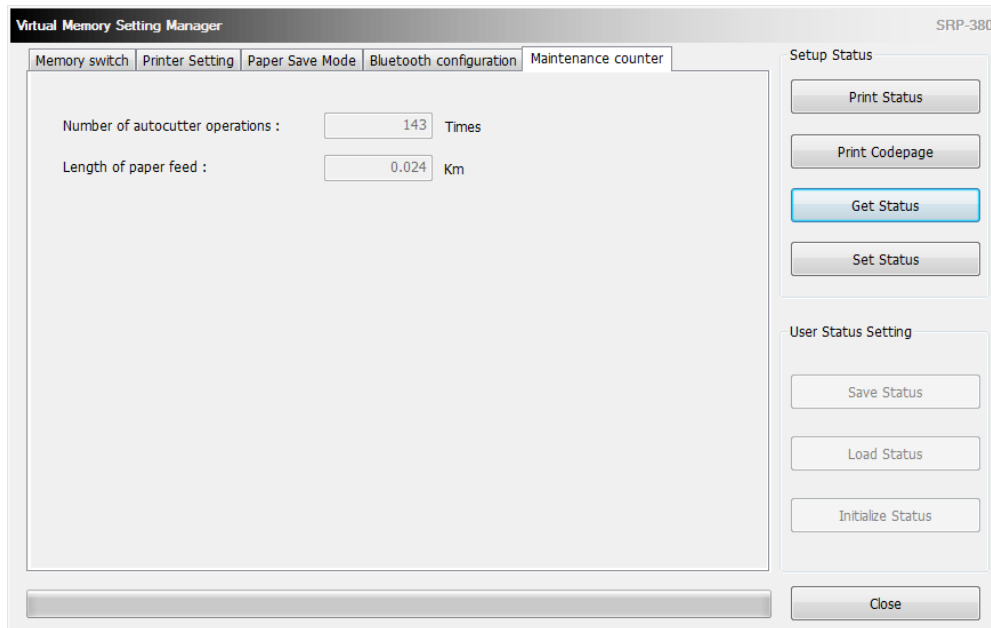


#### Supported Model

SRP-350IIIBE, SRP-350plusIII/352plusIII, SRP-F310II/F312II/F313II,  
SRP-380/382/383, SRP-S300, SRP-Q300/Q302, SRP-Q200

## 4-1-6 Maintenance counter

You can check the number of auto cut operation and amount of paper feed which have been performed by the printer.



**Note**

**Supported Model**  
SRP-F310II/F312II/F313II, SRP-380/382/383, SRP-Q300/Q302,  
SRP-QE300/QE302

## 4-1-7 Black Marks setting

Adjusting values for cutting position to non-volatile memory.

Virtual Memory Setting Manager BK3-3

Memory switch | Printer Setting | Paper Save Mode | Serial communication setting | **Black Marks setting**

Auto-load powering on

Disable

1st Memory (mm)

Length between black marks: 177

Cutting position after black mark: 0

2nd Memory (mm)

Length between black marks: 0

Cutting position after black mark: 0

3rd Memory (mm)

Length between black marks: 0

Cutting position after black mark: 0

Get Status

Set Status

Setup Status

Print Status

Print Codepage

Get Status

Set Status

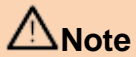
User Status Setting

Save Status

Load Status

Initialize Status

Close



**Note**

Supported Model  
BK3-3

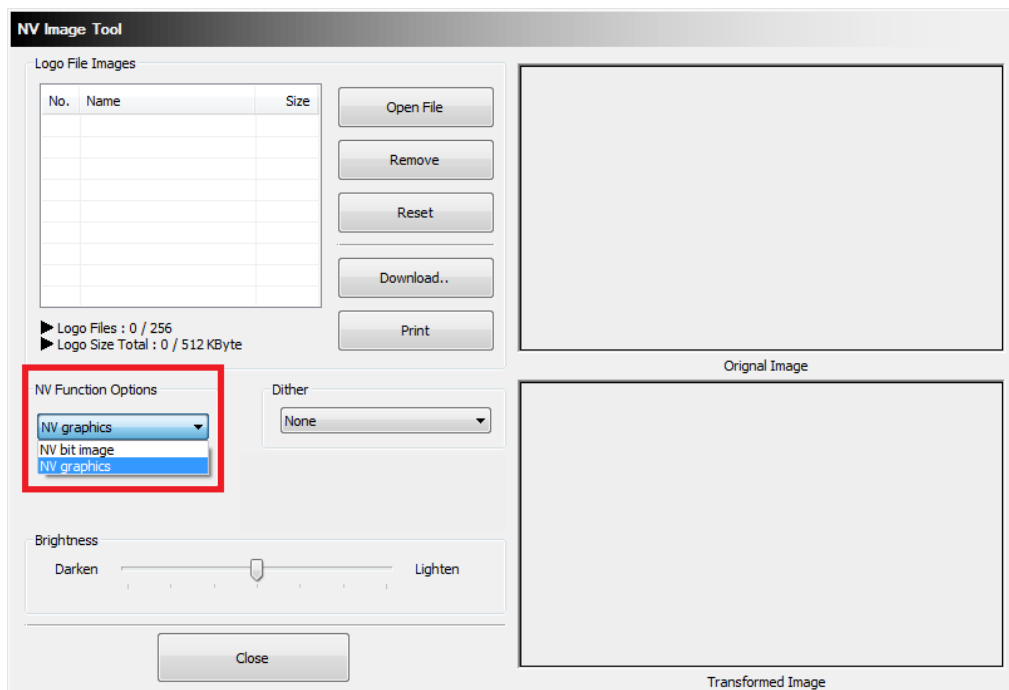
The black mark setting can be adjusted on black mark mode(DIP Switch 1-4 ON).

## 4-2 NV Image Tool

- This function helps you to download user-defined images to the flash memory in the printer and to recall and print those images with fast speed.
- If the Communication Setting is OK, click the “NV Image Tool” button.

### 4-2-1 NV Function Option

If the Printer is supported two-color mode, mono (NV bit image) or two-color (NV graphics) mode can be selected.



**Note**

Please refer to below commands for each mode.

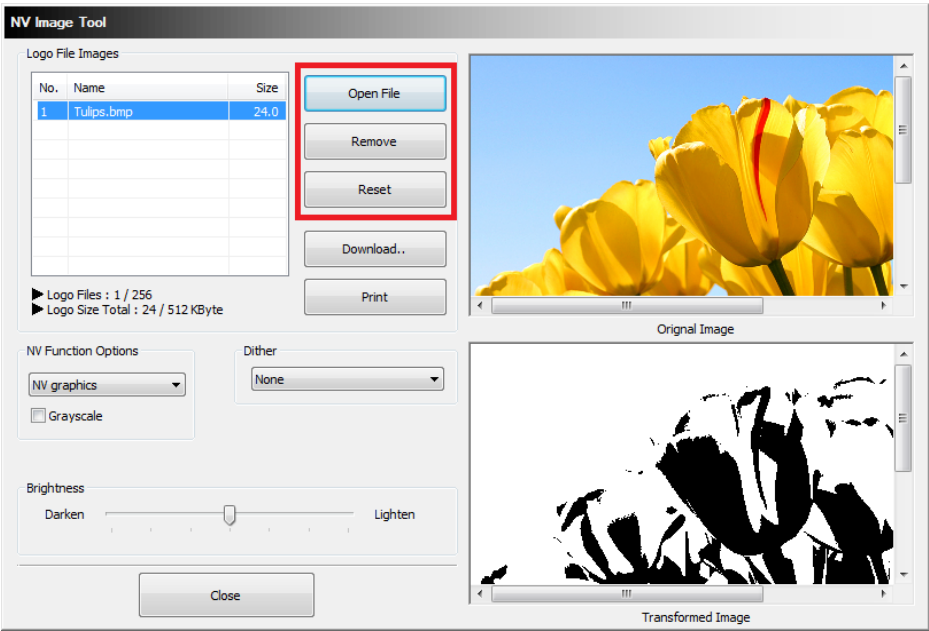
The command for NV bit image: FS p

The command for NV graphics: GS ( L



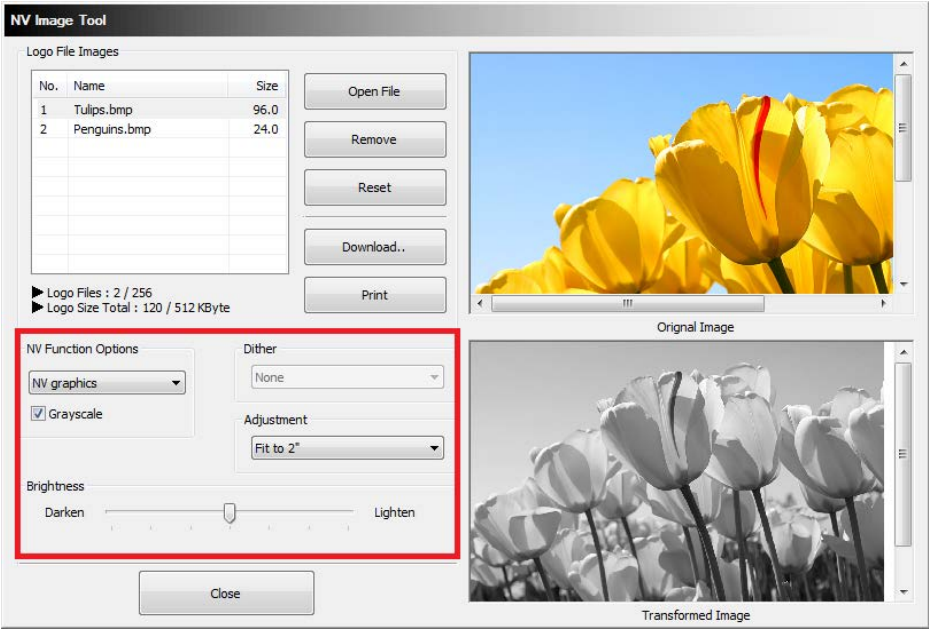
**4-2-2 Image List Management**


The images can be opened, added, deleted in the Image list box using three buttons in Bitmap selection. Only bmp type of image is available to download.



**4-2-3 Correction image**

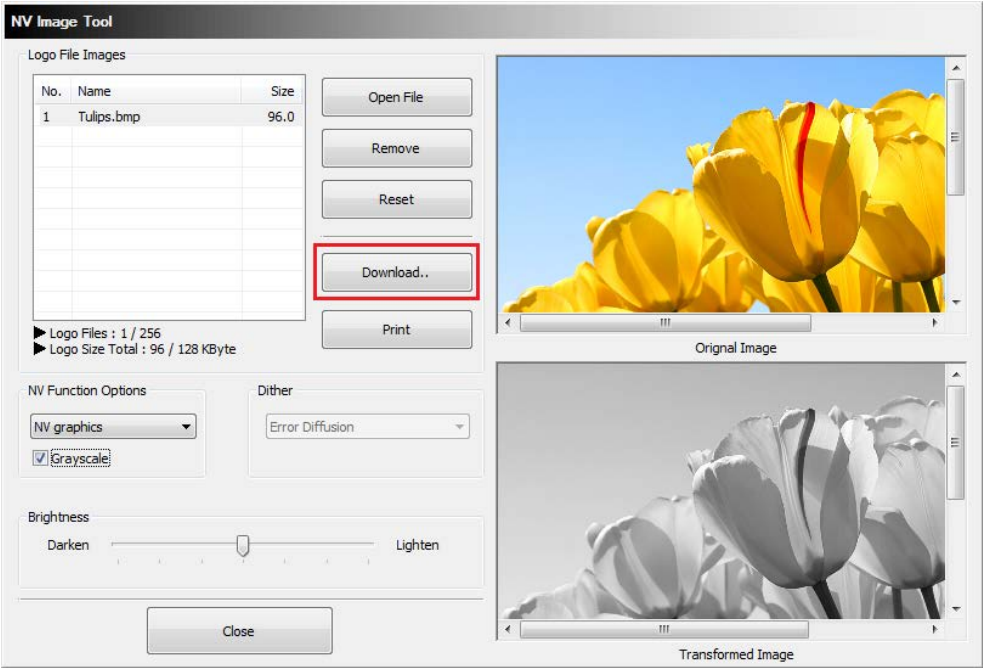
You can get the correction image by selecting a 'Dither', 'Brightness', 'Grayscale' and 'Adjustment' option.



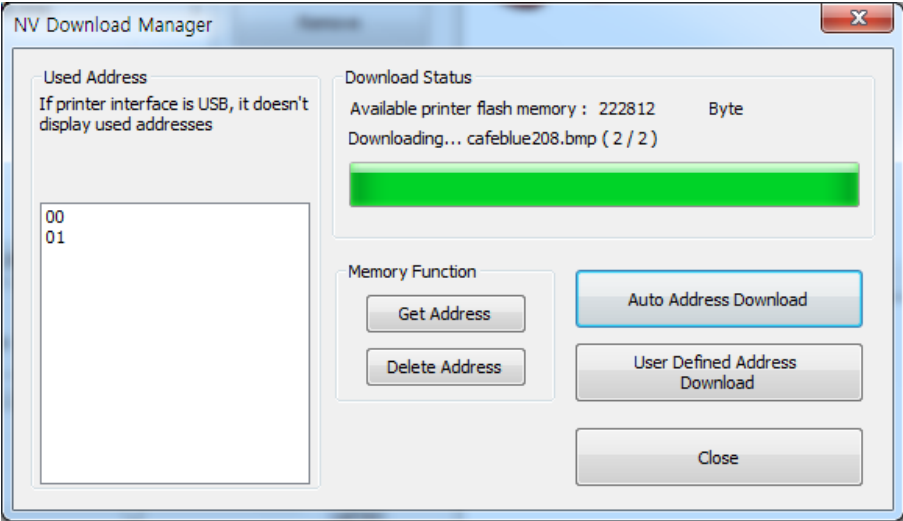
 <b>Note</b>	Supported model by 'Adjustment' SRP-380/382/383, SRP-S300, SRP-Q300/Q302, SRP-QE300/QE302, SRP-E300/E302, BK3-3
	Supported model by 'Grayscale' SRP-350plusIII/352plusIII, SRP-F310II/F312II/F313II, SRP-380/382/383, BGT-100P/102P, SRP-330II/332II, SRP-S300, SRP-Q300/Q302, SRP-QE300/QE302, SRP-E300/E302

**4-2-4 Download the image**

1) When the “Download” button is clicked, pop-up window and the steps are different based on printer model.

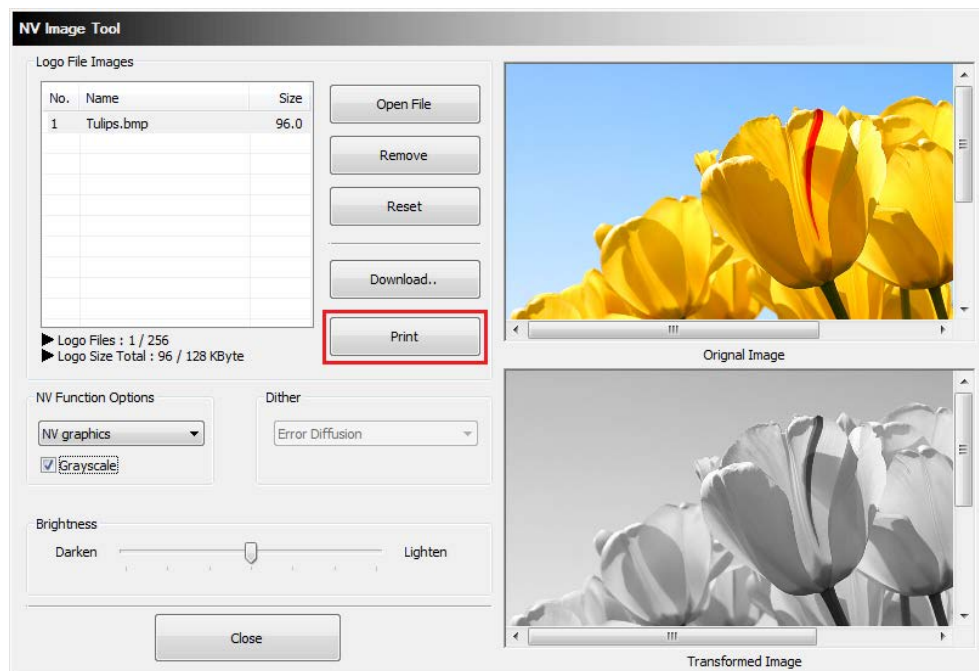


2) After all images stored on the corresponding printer are deleted, the image matching the selected resolution level is downloaded. The image is assigned a number according to the image list displayed on the screen.

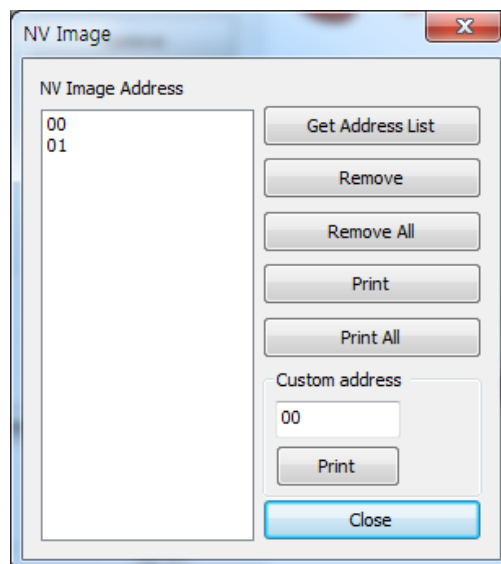


## 4-2-5 Print the image

- 1) The "Print" button in the main screen can be used on each printer model to print and test a stored image.



- 2) After selecting the image to print following the recall of the addresses of all currently stored images, press the "Print" button to print.



## 4-3 Using the Command Test Editor

- 1) If the Communication Setting is OK, click the "Command Test Editor" button.
- 2) If the "Command Test Editor" button is pressed, the following dialog box will appear. Using this Dialog, the user can write and edit the command and send to the printer. Each button of "Printing Option" and "Etc" group can insert commands to edit box. Also "Write Command" button can transfer these commands to the printer. To verify the result of sending the command can use the "Print Test String" button.

**Command Test Editor**

Command (Hex Value, Ex: 1d 61 ff 0a)

\* After Editing the Command,  
Click the Command Write Button to send the Printer.

Write to the Printer  
Write Command

Test Printing  
Print Test String  
Self Test  
Clear command

Printing Option

Font  
Font A Font B Line Spacing Select Codepage  Bold  Underline

Alignment  
Left Alignment Center Alignment Right Alignment

Cut and Feeding  
Paper Cut Feed

Status check  
Status check

Cash Drawer  
Open Drawer1 50ms(2pin) Open Drawer2 50ms(5pin)

File  
Save Load

Close



### Note

It is possible to be different the supported commands by the models. You can download the command manual from the BIXOLON website. (<http://www.bixolon.com>)

## Copyright

© BIXOLON Co., Ltd. All rights reserved.

This user manual and all property of the product are protected under copyright law. It is strictly prohibited to copy, store, and transmit the whole or any part of the manual and any property of the product without the prior written approval of BIXOLON Co., Ltd. The information contained herein is designed only for use with this BIXOLON product. BIXOLON is not responsible for any direct or indirect damages, arising from or related to use of this information.

- The BIXOLON logo is the registered trademark of BIXOLON Co., Ltd.
- All other brand or product names are trademarks of their respective companies or organizations.

BIXOLON Co., Ltd. maintains ongoing efforts to enhance and upgrade the functions and quality of all our products.

In the following, product specifications and/or user manual content may be changed without prior notice.

## Caution

Some semiconductor devices are easily damaged by static electricity. You should turn the printer “OFF”, before you connect or remove the cables on the rear side, in order to guard the printer against the static electricity. If the printer is damaged by the static electricity, you should turn the printer “OFF”.

